

BYOxLink - How to guide


Use guest Wi-Fi service to connect students' Windows devices

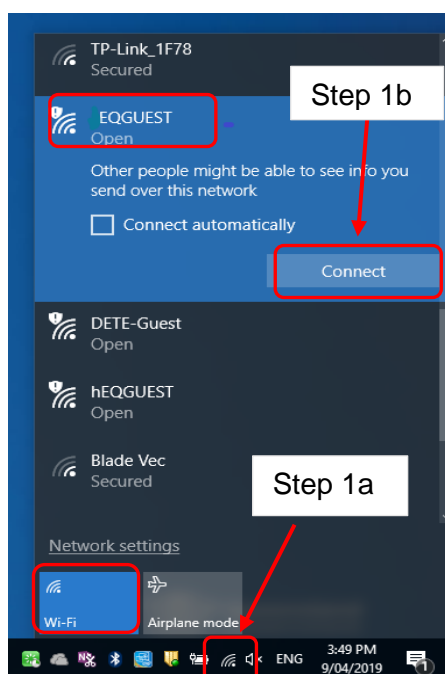
This document explains how a student can connect a Windows device to the school guest Wi-Fi network (EQGUEST) so staff can then complete the Intune enrolment on their device.

The guest Wi-Fi connection is limited and only lasts for eight hours. You may not be able to access some resources such as shared network drives, printers or local school websites through the guest Wi-Fi.

Note: Sign on will only work with a valid school email address i.e. username>@eq.edu.au. You should use your existing school EQ email address.

Step 1. Select the Guest Wi-Fi network

- a. Select the  Wi-Fi icon at the bottom right of the screen.
- b. Scroll the Wi-Fi networks to select EQGUEST. Select **Connect**.



Step 2. Sign on to the Guest Wi-Fi network

- A Sign on page will be displayed
- Enter your EQ email address and password
- Read and accept the Acceptable Use Policy by ticking the box
- Select **Sign On**.

Sign on for guest access.

Email:
mstaf61@eq.edu.au

Password:
.....

The Department of Education's information and communication technology (ICT) network is available for approved purposes only. When using the ICT network you must act at all times lawfully and in line with the rules that apply to you which includes:

- The Code of Conduct
- Department's Standard of Practice
- Public Sector Ethics Act 1994 (Qld)
- Crime and Corruption Act 2001 (Qld)
- Information Privacy Act 2009 (Qld)
- Queensland Government Chief Information Office's (QGCIO) Information security policy, framework and standards
- Departmental ICT policies and procedures.

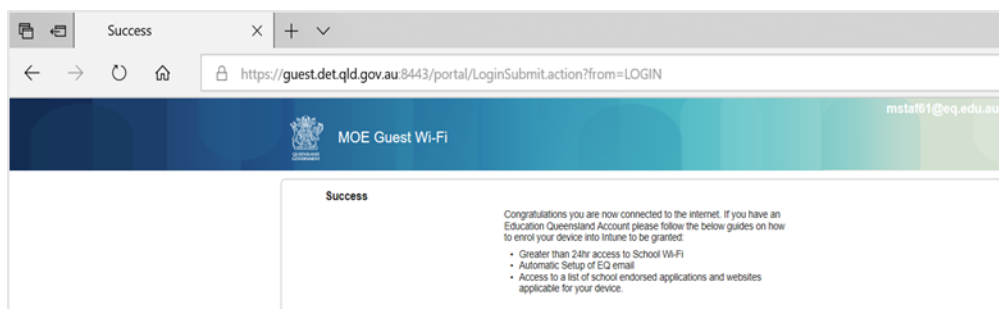
Unauthorised access and use may result in disciplinary action being taken against you. If the department reasonably suspects you are using the ICT network in a manner that constitutes a crime, the department will refer the matter to the police.

You must not attempt to access systems for which you are not authorised, share or let others use your unique username and passwords, or disclose passwords to anyone (even in periods of absence).

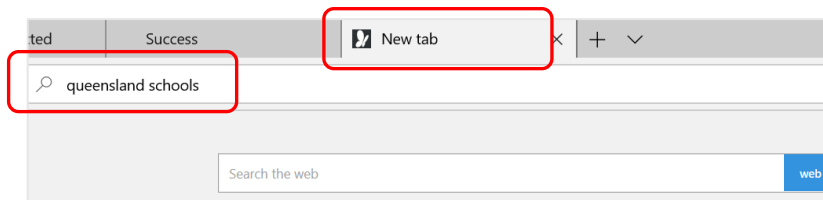
agree to the terms and conditions

Sign On

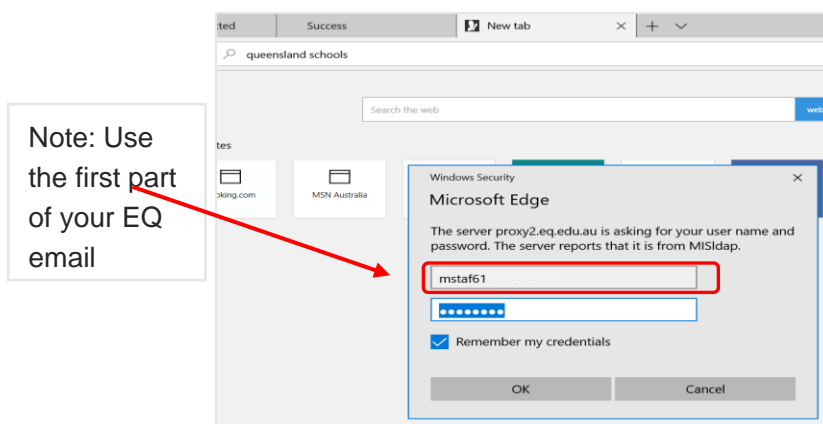
- A success screen will display, close the window.



- Select a new tab in your browser and type a search in the search bar e.g. Queensland schools.



- g. You will be prompted to enter your EQ username and password. Ensure only the first part of your EQ email address is entered e.g. mstaf61. Type your password. Select **OK**.



- h. If your internet is not working, contact your school IT support staff for assistance.

Step 3. Next steps

To access school email, learning applications, printers and shared network drives, you will need to enrol your device into Microsoft Intune. Refer to

[How to guide – Enrol your BYO Windows device into Intune](#) or

[Intune installation video for Windows devices](#)

to complete this process.

